

Iowa and Washington Juniors Top Production Contests

Seasoned Jersey breeders have once again earned the top spots in the youth production contests sponsored by the American Jersey Cattle Association. The high marks reward them for their careful attention to managing and caring for their animals and for choices in the breeding program. Many of the entries descend from foundation animals that were gifts early in their careers or trace to purchases made through state Pot of Gold programs or the national Pot O'Gold program.

The 35 juniors that placed in the 2011 National Jersey Youth Production Contest and the 2012 Pot O'Gold Production Contest will be honored for their achievements on November 3, 2012, at the Junior Banquet, which wraps up Junior Day at All American festivities in Louisville, Ky.

Kara Maxwell, Donahue, Iowa, will be recognized for winning the 2011 National Jersey Youth Production Contest with her entry, Cinnamon Ridge Rasmus Lily. For the second time, Michael R. Kortus, Lynden, Wash., will be honored for topping the Pot O'Gold Production Contest. His winning entry for the 2012 contest is Kilgus Finalist Gem-ET.

The 22 winners in the Pot O'Gold Production Contest will receive cash prizes and certificates. The 20 winners in the National Jersey Youth Production Contest will be given plaques and cash awards made possible by Jersey breeders who consign their animals to the National Heifer Sale. Each year, 10% of the proceeds from this sale are designated for youth program support, including the National Jersey Youth Production Contest.

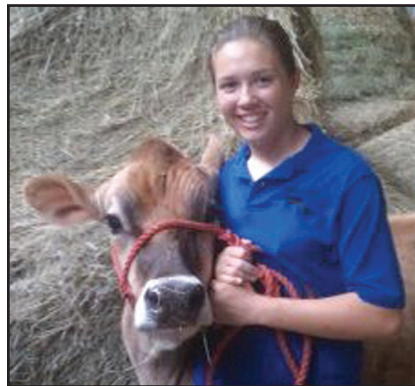
Records for both production contests are ranked by the multiple component pricing dollar value of the record. Dollar value is determined by calculating the 305-day mature equivalent (m.e.), then applying the Net Merit Dollars component values that are used for genetic evaluations from the U.S. Department of Agriculture. The component values are \$1.63 per pound fat, \$1.94 per pound protein and \$0.0286 per pound volume.

National Youth Production Contest

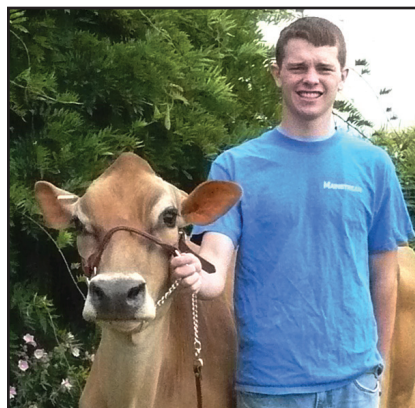
This contest recognizes the efforts of junior owners to compile and utilize official production records on their animals. Through this one activity, youth gain experience in using records to manage and breed

their Jersey cows and understand the value of production.

To qualify for the competition, cows must have completed a lactation of no more than 305 days during the calendar year. The contest is divided into two divisions. Division I is for first-lactation cows that calve before they reach 30 months-of-age; Division II is for all other cows. Participants are eligible for an award in only one division and an



Kara Maxwell won the 2011 National Jersey Youth Production Contest with her entry, Cinnamon Ridge Rasmus Lily.



Michael Kortus won the 2012 Pot O'Gold Production Contest with Kilgus Finalist Gem-ET. This is the second Pot O'Gold win for the Washington junior. Though "Gem" is no longer in the herd, the junior has plenty of other standouts from which to build his herd, including Mainstream Final Remember, Excellent-91%, a granddaughter of his winning entry for the 2003 National Youth Production Contest, Lagerweys Hallmark Redrose.

overall contest winner is recognized. A junior is eligible to win the overall National Jersey Youth Production Contest just once.

Total cash awards are \$550. Each division winner receives \$100. The second place honoree receives \$75; third takes

home \$50; and fourth receives \$25. The overall winner gets an additional \$50, bringing their award to \$150.

This year, 104 qualified entries from 55 juniors were received. The 20 animals ranked in this year's contest have an m.e. average of 25,605–1,216–901 and a dollar value average of \$4,462.64.

Division II

The winner of Division II of the National Jersey Youth Production Contest is the overall winner as well. Cinnamon Ridge Rasmus Lily, owned by Kara Maxwell, completed a second lactation with a dollar value of \$5,122.21 and an m.e. of 30,620–1,296–1,100. Actual production on the 3-0 record is 25,380 lbs. milk, 1,107 lbs. fat and 933 lbs. protein in 305 days.

The five-year-old daughter of Yosemite Lemvig Brook Rasmus, GJPI +63, has since completed her third lactation of 24,600 lbs. milk, 1,016 lbs. fat and 900 lbs. protein at 3-11 and is due with her fourth calf by All Lynns Vibrant Sebastian, GJPI +203, in mid-October.

Kara's herd is managed with the rest of the herd at Cinnamon Ridge Dairy, owned by Kara and her elder sister, Amy, father, John, and uncle, Edwin. Kara owns about 40 Registered Jerseys in her name and another 50 in partnership with Amy. Cows are currently housed at Bohnert Jerseys in East Moline, Ill., but will be moved to Cinnamon Ridge Dairy when a new freestall barn and parlor with robotic milkers is completed in November.

Though she has been doing chores on the farm since she can remember, Kara got a calf of her own as an early Christmas present when she was nine years old. "It didn't change any of my responsibilities on the farm," recalled Kara. "But the fact that I actually owned an animal at that point was a big deal."

This calf, Paramount Sue, was a purchase from the Pot O'Gold Sale in 2003. Kara found success in production contests early as "Sue" placed in the Pot O'Gold Production Contest in 2006 with her first lactation and in the National Youth Production Contest in 2008 with her third lactation. Kara has purchased three other heifers in Pot O'Gold Sales in the years since. All have placed in the Pot O'Gold Production Contest, including Jazzy Impuls 3084, who

(continued to page XX)

2011 National Jersey Youth Production Contest

104 qualifying entries submitted by 55 juniors. Top 20 entries averaged 25,605–1,216–901, MCP value \$4,462.64.

Animal Name Owner	Mature Equivalent Actual Lactation Record	MCP Dollar Value
Division I: Calving before 30 months of age		
Front Line Duaiseoir Ginger Snap <i>Emily C. Cooper, Delta, Pa.</i>	27,874–1,305–972 2-0 305 21,950 4.7% 1,040 3.5% 759	\$4,810.00
Matinee Lucky L Bernice <i>Avery Lutz, Radford, Va.</i>	28,449–1,296–961 1-11 290 19,840 4.7% 925 3.4% 677	4,790.46
GR Clemson Dale 783 907 <i>Nathan Lawton, Newark Valley, N.Y.</i>	27,689–1,352–903 1-9 305 21,340 4.9% 1,039 3.2% 689	4,747.49
Dutch Hollow Paramount Gadget <i>Cassandra L. Chittenden, Schodack Landing, N.Y.</i>	25,709–1,308–912 1-9 305 3x 21,360 5.0% 1,064 3.5% 745	4,636.60
Dutch Hollow Jevon Essence <i>Emily Jane Chittenden, Schodack Landing, N.Y.</i>	26,466–1,301–900 1-9 305 3x 21,920 4.8% 1,052 3.3% 723	4,623.56
D&E Abe Wyonna 21390 <i>Tricia Jo Kirchoerfer, Cape Girardeau, Mo.</i>	26,201–1,083–933 1-10 305 19,680 4.2% 821 3.5% 698	4,324.66
Dutch Hollow Mik Olive–P <i>Maxwell S. Chittenden, Schodack Landing, N.Y.</i>	23,209–1,273–816 1-8 305 3x 18,320 5.5% 1,010 3.5% 643	4,321.81
Will Do Jevon Wynona <i>Amber L. Ettinger, Kinards, S.C.</i>	25,747–1,095–875 2-1 305 19,100 4.4% 845 3.4% 640	4,218.71
Chapmans Restore Sadie <i>Mandy Nicole Lutz, Lincolnton, N.C.</i>	24,369–1,130–849 1-10 305 18,020 4.7% 851 3.5% 625	4,185.91
Nymans Achilles 10646 <i>Clayton Kirchoerfer, Cape Girardeau, Mo.</i>	22,292–1,136–816 1-11 305 17,680 5.2% 922 3.7% 648	4,072.27
Division II: All other lactations		
Cinnamon Ridge Rasmus Lily <i>Overall Winner</i> <i>Kara Maxwell, Donahue, Iowa</i>	30,620–1,296–1,100 3-0 305 25,380 4.4% 1,107 3.7% 933	\$5,122.21
Normandell Geronimo Violet <i>Ryan Lawton, Newark Valley, N.Y.</i>	28,611–1,350–1,016 3-0 305 24,870 4.9% 1,222 3.7% 908	4,989.81
Yosemite Abe Futurity H2486 <i>Colin R. Russell, Hilmar, Calif.</i>	25,911–1,108–950 3-1 305 3x 26,500 4.2% 1,101 3.6% 961	4,390.09
Rocha Impuls Whitney <i>Tommy Allen, Reedsburg, Wis.</i>	26,447–1,105–926 4-4 305 3x 30,680 4.1% 1,271 3.4% 1,034	4,353.97
Gieseke Militia Malibu <i>Clay Steven Gieseke, St. James, Minn.</i>	22,523–1,252–848 3-3 305 21,590 5.7% 1,236 3.8% 825	4,330.04
D&E Abe Eda <i>Theresa G. Sweeney, Visalia, Calif.</i>	25,525–1,100–919 4-10 305 23,320 4.3% 1,011 3.7% 854	4,305.88
Jo-Kirch Matinee Bananas <i>Tyler C. Kirchoerfer, Cape Girardeau, Mo.</i>	24,402–1,185–853 3-1 305 20,530 5.0% 1,034 3.6% 738	4,284.27
Bellvale Jace Tille <i>Jasmine Noteboom, Warwick, N.Y.</i>	25,441–1,129–879 4-6 305 25,050 4.4% 1,105 3.4% 861	4,273.14
Dominos Legion Mist <i>Katherine Elizabeth DeWitt, Accord, N.Y.</i>	23,614–1,192–846 2-11 305 19,530 5.2% 1,021 3.7% 721	4,259.56
Dutch Hollow Avery Sparkles <i>Meagan E. Chittenden, Schodack Landing, N.Y.</i>	21,008–1,329–745 10-8 305 3x 21,870 6.1% 1,344 3.5% 766	4,212.40

Youth Production Contests

(continued from page XX)

placed sixth in this year's contest.

"My main objective has always been to improve milk production," stated Kara. "I try to accomplish this with management, feeding and genetics."

The effort is working for the production-minded junior, whose 2011 herd average stands at 18,935 lbs. milk, 956 lbs. fat and 711 lbs. protein on 21 cows. Five members of the milking string produced Hall of Fame records in 2011, including "Lily" and "Impuls 3084."

Kara has also begun to use genomic evaluations to make herd management decisions. Twins out of "Lily," two daughters of "Impuls 3084" and several other heifers have been genotyped. One of the genotyped heifers, Cinnamon Ridge Valentino Frosty, ranks on the list of the Top 500 Heifers for GJPI with an index of +205.

Kara is a freshman in the honors program at Iowa State University, where she is double majoring in agriculture business and dairy science. She placed fourth in this year's National Jersey Youth Achievement Contest and received the William A.

Russell Memorial Scholarship. She was a member of the second class of Jersey Youth Academy in 2011.

Placing second in the division for older cows is a junior who earned second in the younger division of the contest last year with the same cow—Ryan Lawton, Newark Valley, N.Y., and Normandell Geronimo Violet. The Very Good-83% daughter of C-Bar Hallmark Geronimo, GJPI +69, produced a 3-0 record with a dollar value of \$4,989.81 and an m.e. of 28,611–1,350–1,016. Actual production on the record is 24,870 lbs. milk, 1,222 lbs. fat

and 908 lbs. protein.

Ryan purchased "Violet" from Normandell Farms, Liberty, Pa., in the Pennsylvania Pot of Gold Sale in 2008. She has proven to be a sound investment for the seventh grader. She has calved three times with three heifer calves and is working on her third record in excess of 21,000 lbs. milk. She freshened in mid-January, peaked with 104 lbs. milk on her April test and is projected to make more than 25,000 lbs. milk this lactation.

"Violet's" oldest daughter, Lawtons TBone Volcano, appraised Very Good-86% and has an m.e. of 19,539-1,068-713 on her first lactation. "Violet's" second daughter, Lawtons Action Victoria, was named Junior Champion of the Broome County (N.Y.) Junior Jersey Show this summer.

Ryan has helped to build his herd, which now includes six milking cows and 10 heifers, with three purchases from the national Pot O'Gold Sale—two in his ownership and one in partnership with his brother, Nathan. Ryan's purchase from the sale in 2009, SAR Walker Harley, Very Good-85%, placed 12th in this year's Pot O'Gold Production Contest.

Another junior returning to the top rankings in Division II of the youth production contest is Colin R. Russell, Hilmar, Calif. His entry, Yosemite Abe Futurity H2486, made a record with a dollar value of \$4,390.09 and an m.e. of 25,911-1,108-950. Actual production for the 3-1 record is 26,500 lbs. milk, 1,101 lbs. fat and 961 lbs. protein (3x milking).

The Very Good-83% daughter of Ahlem Lemvig Abe-ET, GJPI +147, is a model of Jersey reproductive efficiency. She produced a subsequent record of 4-4 260 3x 22,700 4.1% 938 3.7% 831 97DCR and freshened in mid-July with her fourth calf at 5-4 and gave 87 lbs. milk on her first test.

Colin has placed in the youth production contest two of the past three years, each time with homebred entries. He was a member of the second class of Jersey Youth Academy.

A fellow member of that Jersey Youth Academy class, Tommy Allen, Reedsburg, Wis., places fourth with Rocha Impuls Whitney. The Very Good-89% daughter of ISDK Q Impuls, GJPI +175, produced a record with a dollar value of \$4,353.97 and an m.e. of 26,447-1,105-926. Actual production for the 4-4 record is 30,680 lbs. milk, 1,271 lbs. fat and 1,034 lbs. protein (3x milking). She calved in December 2010 and gave more than 100 lbs. milk on four monthly tests, peaking in March with 134 lbs. milk.

Tommy purchased "Whitney" from the Pot O'Gold Sale in 2007. She placed 10th in

(continued to page xx)

Winners of the National Youth Production Contest

Year	Name Owner	ME Milk	ME Fat	ME Protein	Value Basis
2011	Cinnamon Ridge Rasmus Lily Kara Maxwell, Donahue, Iowa	30,620	1,296	1,100	\$5,122.21 <i>MCP Dollar Value</i>
2010	Sniders Future Fenola Tucker Hardy, Belleville, Pa.	30,143	1,808	1,110	\$5,962.53 <i>MCP Dollar Value</i>
2009	Michael Centurion Darla Colin Wussow, Cecil, Wis.	30,123	1,438	1,002	\$5,149.34 <i>MCP Dollar Value</i>
2008	MVF Kulp Brazo Shannon Dylan Ellenburg, Morristown, Tenn.	29,733	1,531	1,117	\$4,950.38 <i>MCP Dollar Value</i>
2007	Ahlem Jace Charm 15069-ET Kailla Wussow, Cecil, Wis.	36,381	1,713	1,154	\$5,401.90 <i>MCP Dollar Value</i>
2006	Yosemite Jerrick Lemvig D14230 Andrew M. Bok, Defiance, Ohio	28,183	1,198	1,093	\$4,379.28 <i>MCP Dollar Value</i>
2005	Dupat Bill J832 Mary Katherine Rawn, Charles Town, W. Va.	29,873	1,361	1,141	\$4,752.08 <i>MCP Dollar Value</i>
2004	OCS Dairy Baby Blue Chase A. Smith, Jefferson, Md.	34,746	2,125	1,132	\$5,783.05 <i>MCP Dollar Value</i>
2003	Lagerweys Hallmark Redrose Michael R. Kortus, Lynden, Wash.	33,881	1,559	1,182	\$5,151.87 <i>MCP Dollar Value</i>
2002	Four Springs Counciller Crystal Josh Kellerman, Centre Hall, Pa.	26,917	1,297	940	\$4,157.72 <i>MCP Dollar Value</i>
2001	Sunbow Bold Daniel Emerald Alex Steer, Cottage Grove, Tenn.	30,686	1,331	1,101	\$4,645.06 <i>MCP Dollar Value</i>
2000	Mainstream Berretta Joy Melissa R. Kortus, Lynden, Wash.	34,657	1,619	1,237	\$4,926.58 <i>MCP Dollar Value</i>
1999	Lagerweys 285 Silky Melissa R. Kortus, Lynden, Wash.	31,574	1,567	1,140	\$5,460.76 <i>MCP Dollar Value</i>
1998	Berrettas Linette Wendy Marie Bok, Defiance, Ohio	29,810	1,416	1,153	\$5,593.93 <i>MCP Dollar Value</i>
1997	Golden MBSB of Twin Haven-ET Travis Ferreira, Lemoore, Calif.	25,459	1,399	1,078	\$4,564.37 <i>MCP Dollar Value</i>
1996	LJF2 SB Berretta Haley Samantha Jo Barmore, Smithfield, Ky.	29,760	1,536	1,214	\$5,690.27 <i>MCP Dollar Value</i>
1995	GR MG Bossman Debra Ben Snell, Chowchilla, Calif.	28,082	1,291	1,082	\$4,365.96 <i>MCP Dollar Value</i>
1994	Rock Maple BV Maria Timothea-ET Jeanesse Rodeffer, Snohomish, Wash.	27,621	1,130	999	\$4,143.81 <i>MCP Dollar Value</i>
1993	Ahlarlay Be Magic Wandas Wand Joey Anderson, Onalaska, Wash.	26,013	941	984	984 <i>ME Protein</i>
1992	Martinas Goldie Michael Pendleton, Hopkinsville, Ky.	28,204	1,588	1,035	1,035 <i>ME Protein</i>
1991	Sun Valley Sooner Sunday Martin Watson, Troy, Pa.	27,662	1,415	1,143	1,143 <i>ME Protein</i>
1990	Farwest Samson Cynthia Stephanie Samson, Emmett, Idaho	24,304	1,222	916	916 <i>ME Protein</i>
1989	Duncan Brave PR Dee Tom Seals, Myrtle Point, Ore.	24,883	1,038	849	28,319 <i>Protein Standardized</i>
1988	Jersey Nooks Black Judy Ralph Reichert Jr., Riley, Kan.	20,920	1,174	876	30,715 <i>Protein Standardized</i>
1987	Renzo Magic Lee Shannon Lourenzo, Ferndale, Calif.	24,063	1,101	922	30,443 <i>Protein Standardized</i>
1986	Diamond S General Josie Michael D. Skiba, North Branch, Minn.	25,466	1,195		28,111 <i>Fat Corrected Milk</i>
1985	GR CDF Ro Leen Magic Dana Todd Silveira, Los Banos, Calif.	24,742	1,215		28,122 <i>Fat Corrected Milk</i>
1984	Mills Mike Dimple Dona Casale, Denair, Calif.	21,750	1,060		24,600 <i>Fat Corrected Milk</i>
1983	Bettydon Classic Nadia Paul Thun, Tillamook, Ore.	21,564	904		22,186 <i>Fat Corrected Milk</i>
1982	Sun Valley Hero Aleen Dave Seals, Myrtle Point, Ore.	20,575	941		\$3,054.66 <i>Dollar Value</i>
1981	SLJ Faithful Mary Frances Judy Warren, Miller, Mo.	19,580	1,071		\$3,208.05 <i>Dollar Value</i>
1980	Headspring Lancer Darle Russell Lynn Isley, Burlington, N.C.	19,619	1,094		\$3,237.61 <i>Dollar Value</i>
1979	Russell Surville Lucille Scott H. Russell, Turnbridge, Vt.	20,228	1,050		\$2,811.89 <i>Dollar Value</i>
1978	The Pepsi Peanut Popcorn Delight Scott Bateman, Lee, N.H.	18,499	1,085		\$2,483.76 <i>Dollar Value</i>
1977	Generators Faustine of Ogston Heather Dawn Acomb, Stafford, N.Y.	22,955	1,068		\$2,467.66 <i>Gross Value</i>
1976	Zev of Ogstons Dani Cynthia Ann Waltemyer, Collegeville, Pa.	24,561	1,175		\$2,674.70 <i>Gross Value</i>
1975	Jestermaids Surville Rosey Mitzi A. Lacobee, Shongaloo, La.	23,594	999		\$2,177.73 <i>Gross Value</i>
1974	Jestermaid Jester Jean Paul Lacobee, Shongaloo, La.	20,610	901		21,759 <i>Energy Corrected Milk</i>
1973	Galelands Epic Little Nix Barbie J. Gale, Yardley, Pa.	15,730	894		19,702 <i>Energy Corrected Milk</i>
1972	Edyvean Surville Carmel Susan J. Brown, Hughson, Calif.	20,079	910		21,682 <i>Energy Corrected Milk</i>
1971	Russell Pompey Pauline Mark Russell, Turnbridge, Vt.	19,131	1,066		23,642 <i>Energy Corrected Milk</i>
1970	Liberators Eminent Regent Joy Jerry D. Rodeffer, Mooreland, Ind.	17,830	915		20,857 <i>Energy Corrected Milk</i>
1969	Pathfinder Joy of Sun Valley Robert Oliver, Mt. Angel, Ore.	17,084	846		2,502 <i>Total Solids</i>
1968	Headspring Blonde Ban Boyd H. Parr, Newberry, S.C.	18,310	955		2,705 <i>Total Solids</i>

(continued to page xx)

Rankings in the 2012 Pot O'Gold Production Contest

Name Address	Animal Consignor	Purchase Price	MCP Dollar Value	Cash Prize
Michael R. Kortus Lynden, Wash.	Kilgus Finalist Gem-ET <i>Paul Kilgus, Fairbury, Ill.</i>	\$2,600	\$6,847.44	\$2,408.22
Nathan Lawton Newark Valley, N.Y.	GR Clemson Dale 783 907 <i>Clemson University Dairy Farm, Clemson, S.C.</i>	2,800	4,747.49	1,538.59
Jacob Phillips Golden, Ill.	Woodstock Jevon Rudi <i>Woodstock Dairy, Beaver, Ore.</i>	2,000	4,332.63	1,070.32
Tricia Jo Kirchoerfer Cape Girardeau, Mo.	D&E Abe Wyonna 21390 <i>D & E Jerseys, Hilmar, Calif.</i>	2,200	4,324.66	869.64
Tyler Kirchoerfer Cape Girardeau, Mo.	Jevon J May <i>Rowzee Jersey Farm, Newton, Miss.</i>	3,400	4,297.64	802.74
Kara Maxwell Donahue, Iowa	Jazzy Impuls 3084 <i>Vincent Endres, Lodi, Wis.</i>	2,800	4,289.47	735.85
Clayton Kirchoerfer Cape Girardeau, Mo.	Nymans Achilles 10646 <i>Nyman Bros., Hilmar, Calif.</i>	1,900	4,072.27	668.95
Abby Tauchen Bonduel, Wis.	GR Ahlem Dale Dusty 31906-ET <i>William Ahlem, Jr., Hilmar, Calif.</i>	1,900	3,899.70	602.06
Benjamin P. Colopy Castile, N.Y.	Tenn Jevon GED Maid-ET <i>University of Tennessee Dairy Research & Education Center, Lewisburg, Tenn.</i>	2,700	3,800.69	535.16
Matt Linehan River Falls, Wis.	Fairway Louie Linden <i>Fairway Jerseys, Crockett, Va.</i>	3,100	3,790.83	535.16
Dorothea Riley Baker Wyoming, N.Y.	JCJ Jevon 18517 <i>James Ahlem, Hilmar, Calif.</i>	2,300	3,773.34	401.37
Ryan Lawton Newark Valley, N.Y.	SAR Walker Harley <i>Clifford Henry Stiles, Newberry, S.C.</i>	2,500	3,772.94	401.37
Hannah Sorenson Pine River, Wis.	Monte Fletch <i>Cedarcrest Farms, Faunsdale, Ala.</i>	1,600	3,730.43	401.37
Tommy Allen Reedsburg, Wis.	Jars of Clay latola 16710 2751 <i>Jim Quist, Fresno, Calif.</i>	4,100	3,709.92	334.48
Benjamin P. Grammer Sebring, Ohio	CDF Tbone Kody M25673 <i>C & S Livestock, Hilmar, Calif.</i>	2,000	3,698.27	334.48
Wyatt Taylor Hilmar, Calif.	Dutch Hollow Jevon Deer <i>Karin Chittenden Couch, Schodack Landing, N.Y.</i>	2,900	3,674.24	334.48
Caitlin Avila Dalhart, Texas	Yosemite Noah Bold J7147 <i>Yosemite Jersey Dairy, Hilmar, Calif.</i>	1,900	3,624.92	267.58
Carley Orman Dalhart, Texas	GR Sunwest Ghent Passion J22832 <i>Sunwest Jersey Dairy, Hilmar, Calif.</i>	1,700	3,570.29	267.58
Brock Tate Hilmar, Calif.	Celestial Jevon Kiwi <i>Scott and Kristin Carson, New Lebanon, N.Y.</i>	4,100	3,492.50	267.58
William D. Grammer Sebring, Ohio	Hilmar Aron 22747 <i>Charles Ahlem, Hilmar, Calif.</i>	2,300	3,491.32	200.69
India Tauchen Bonduel, Wis.	GR Hockett Dale 82824 <i>Keith Hockett, Randelman, N.C.</i>	3,000	3,354.04	200.69
Korri Ann Briggs Campbellsville, Ky.	OHD Impuls Rally J668 <i>Olympic Horned Dorsets Inc., Bonduel, Wis.</i>	3,300	3,203.94	200.69

Youth Production Contests

(continued from page XX)

the production contest in 2010. She has 15 registered progeny, including a son in A.I. One of her daughters, All Lynns Valentino Wixen-ET, ranks on the list of the Top 500 Heifers for GJPI with an index of +212. Tommy consigned another daughter, All Lynns Vibrant Wholesome-ET, to the Pot O'Gold Sale in 2011. She was the second high seller, purchased by Jonas Tate, Hilmar, Calif., for \$9,200.

Rounding out the top five placings in

the division for older cows is Clay Steven Gieseke, St. James, Minn., with his entry, Giesekes Militia Malibu. In her second lactation, the daughter of Sunset Canyon RP Militia-ET, GJPI +108, produced a record with a dollar value of \$4,330.04 and an m.e. of 22,523-1,252-848. Actual production is 21,590 lbs. milk, 1,236 lbs. fat and 825 lbs. protein at 3-3.

Division I

Making her debut in the youth production contest ranked first in the division

for younger cows is Emily C. Cooper, Delta, Pa. Her entry, Front Line Duaiseoir Ginger Snap, produced a 2-0 record with a dollar value of \$4,810.00 and an m.e. of 27,873-1,305-972. Actual production for her first lactation is 21,950 lbs. milk, 1,040 lbs. fat and 759 lbs. protein.

The Excellent-90% daughter of Shamrock Duaiseoir-ET, GJPI -138, freshened with her second calf in early December. She peaked with 94 lbs. milk on her February test and is projected to make 22,377 lbs.

(continued to page xx)

Youth Production Contests

(continued from page XX)

milk, 1,129 lbs. fat and 832 lbs. protein.

The high school junior has been involved with Jersey youth projects for five years. Her herd of three cows and two heifers—daughters of “Ginger Snap”—is managed with the Holstein herd owned by her parents. Emily begged her parents for a Jersey as a youth project after she became acquainted with the breed during judging practices at Hope Acres LLC in Brogue, Pa. When it came time to choose a calf, they looked through the heifer pens at Hope Acres and selected “Ginger Snap.”

She has proven her worth not only in the milk pail, but as an equity booster as well. Her daughter by Sunset Canyon Amenity, GJPI +11, is due to calve this fall. Her polled daughter by Maack Dairy Eclipses-P-ET, GJPI +86, was a member of Emily’s show string this summer.

Emily also found success with her judging skills in recent years. She was a member of the York County dairy judging team that competed at the Pennsylvania All-American Dairy Show last month and was third high individual overall. As important, she is serving as a mentor for her younger brothers, Max and Grant, who are following in her footsteps with Jerseys.

In her last year of eligibility, Avery Lutz, Radford, Va., places second with Matinee Lucky L Bernice, a purchase from the 2009 North Carolina Pot of Gold Sale. The Very Good-87% daughter of Sunset Canyon Matinee-ET, GJPI +135, produced a record with a dollar value of \$4,790.46 and an m.e. of 28,449–1,296–961. Actual production on the 1-11 record is 19,840 lbs. milk, 925 lbs. fat and 677 lbs. protein in 290 days.

Avery purchased “Bernice” from Dennis T. Leamon, Statesville, N.C. She was the high-producing Jersey owned by a junior in the state in 2011 and topped the 2012 North Carolina Pot of Gold Production Contest. Avery consigned her to The All American Jersey Sale in 2011, where she was purchased by Adrie Vanderjagt, Sulpher Springs, Texas.

Avery will be able to build on “Bernice’s” genetics as she retains her two daughters in the Deerview Jerseys herd owned by her family.

Nathan Lawton, Newark Valley, N.Y., places third in the production contest and second in the 2012 Pot O’Gold Production Contest with GR Clemson Dale 783 907. His purchase from Clemson University in Clemson, S.C., produced a first lactation with a dollar value of \$4,747.49 and an m.e. of 27,689–1,352–903. The Very Good-82% daughter of PR Oomsdale Jace Gratiit Garden-ET, GJPI +162, produced an actual

(continued to page xx)

Winners of the Pot O’Gold Production Contest

Year	Name Owner	Purchase Price	Award Received	% Award of Purchase Price
2012	Kilgus Finalist Gem-ET Michael R. Kortus, Lynden, Wash.	\$2,600	\$2,408.22	93%
2011	Rocha Iatola Whistle-ET Kaila Wussow, Cecil, Wis.	3,000	3,231.36	108%
2010	Havs Iatola Topaz Michael R. Kortus, Lynden, Wash.	4,000	4,007.07	100%
2009	MVF Kulp Brazo Shannon Dylan Ellenburg, Morristown, Tenn.	2,800	2,215.01	79%
2008	Ahlem Jace Charm 15069-ET Kaila Wussow, Cecil, Wis.	5,750	2,933.01	51%
2007	Al-Top Hallmark Spirit 320 Wendy Marie Bok, Defiance, Ohio	3,000	3,439.44	115%
2006	Lynvail Barkly Trista-ET Wendy Marie Bok, Defiance, Ohio	3,100	3,075.30	99%
2005	Long Distance Rogue Daisy-ET Joshua Parks, Morristown, Tenn.	2,150	3,665.63	170%
2004	Yosemite Jerrick Khan A8409 Wendy Marie Bok, Defiance, Ohio	3,150	3,278.88	104%
2003	Schirm Berretta Lindy Wendy Marie Bok, Defiance, Ohio	3,700	4,946.55	134%
2002	DLM Barber Delight Wendy Marie Bok, Defiance, Ohio	2,900	3,514.75	121%
2001	Ahlem MBSB Lilac 7107-ET Andrew M. Bok, Defiance, Ohio	3,200	2,853.62	89%
2000	Rebob Barber Hurrah D. J. Josi, Tillamook, Ore.	2,600	2,368.10	91%
1999	Berrettas Linette Wendy Marie Bok, Defiance, Ohio	1,800	2,415.70	134%
1998	Pine Valley Glenwood B Vera Andrew Bok, Defiance, Ohio	2,600	2,427.60	93%
1997	LJF2 SB Berretta Haley Samantha Jo Barmore, Smithfield, Ky.	2,400	2,237.20	93%
1996	Sooner Doll of Summer Hope Wendy Bok, Defiance, Ohio	2,300	2,344.42	102%
1995	Rock Maple BV Maria Timothea-ET Jeanesse Rodeffer, Snohomish, Wash.	1,750	2,113.44	121%
1994	Mar Kut Sooner 920 George W. Hanford II, Marcellus, N.Y.	3,000	2,501.38	83%
1993	Praldo Reliant Dun Plum Kathryn Hanford, Marcellus, N.Y.	2,300	2,227.68	97%
1992	Sun Valley Sooner Sunday Martin Watson, Troy, Pa.	2,600	2,784.60	107%
1991	Petersen Pal Penelope David Seals, Myrtle Point, Ore.	1,900	2,058.70	108%
1990	Duncan Brave PR Dee Tom Seals, Myrtle Point, Ore.	2,250	2,320.50	103%
1989	Greenwood Chief Glad Tidings Herby D. Lutz, Chester, S.C.	2,400	1,556.52	65%
1988	Mills Brass Baronet Happy Lori Orisio, Woodburn, Ore.	1,350	1,461.32	108%
1987	Willaval MO Leta Beka Rood, Deming, Wash.	1,650	1,958.74	119%
1986	Berrys Magic Christmas David Seals, Myrtle Point, Ore.	1,250	1,613.64	129%
1985	Sun Valley Midnight Sweetheart Raymond Orisio Jr., Woodburn, Ore.	650	1,713.60	265%
1984	Magic Jody Kelly Young, Yellow Springs, Ohio	3,800	3,468.40	91%
1983	Generators Chic Freddy Schlei, Hopkinsville, Ky.	4,100	3,832.13	93%
1982	Midnight Comedy Heather Dawn Acomb, Stafford, N.Y.	2,200	3,203.06	146%
1981	Ogston Generator Breeze Crystal M. Acomb, Stafford, N.Y.	2,500	2,940.00	118%
1980	Ogston Generator Bebe Crystal M. Acomb, Stafford, N.Y.	2,500	2,568.00	103%
1979	Surville Farmers Love Bruce C. Rhein, Pine Grove, Pa.	1,850	2,437.50	132%
1978	TK F.B. Wilma Heather Dawn Acomb, Stafford, N.Y.	1,500	1,968.75	131%
1977	Zev of Ogstons Dani Cynthia Waltemyer, Collegeville, Pa.	1,200	1,840.62	153%
1976	Generators Valencia of Ogston Heather Dawn Acomb, Stafford, N.Y.	1,100	1,781.25	162%
1975	Ideal Surville Princess Ann Cathryn J. Cross, Cedar Falls, Iowa	1,000	1,503.13	150%
1974	Generators Faustine of Ogston Heather Dawn Acomb, Stafford, N.Y.	950	1,034.38	109%
1973	Raintree Sleeping Janice Gordon C. Barlass, Janesville, Wis.	975	1,278.75	131%
1972	Don Head Linesman Gladys Richard Bourne, Old Lyme, Conn.	1,250	1,269.75	102%
1971	Sleeping Star Joyce Lyle Hanschu, Ramona, Kan.	675	1,050.00	156%
1970	Ettas Master Babe Gordon C. Barlass, Janesville, Wis.	1,050	1,155.00	110%
1969	Marlu Stylist Milestone Lady Randall Steinhausen, Lincoln, Neb.	1,075	1,173.75	109%

(continued to page xx)

Winners of the National Youth Production Contest

(continued from page xx)

Year	Name Owner	ME Milk	ME Fat	ME Protein	Value Basis
1967	Favorite Whispering Willow Dawn David Murray, Healdsburg, Calif.	18,943	906		2,702 Total Solids
1966	Headspring AM Faith Mary B. Parr, Newberry, S.C.	17,369	822		2,456 Total Solids
1965	Noble Leader Maybelle Billie Jean Bowden, Everton, Ark.	15,576	696		2,163 Total Solids
1964	Regent Bond Eminent Lu Jana Dee Rodeffer, Mooreland, Ind.	18,760	945		2,724 Total Solids
1963	Beacons Bright Frances Beauty John M. Diley, Canal Winchester, Ohio	17,451	927		2,600 Total Solids
1962	Basil Johnnys Eva Souvenir William H. Diley Jr., Canal Winchester, Ohio	20,209	1,065		3,011 Total Solids
1961	O Johnny Os Toreador Commander Neal E. Diley, Canal Winchester, Ohio	17,418	905		2,573 Total Solids
1960	Williams View Star Mabel Connie L. Ivy, Quitman, Miss.	17,504	828		2,475 Total Solids
1959	Brampton Jester Blonde Ruby Michael Lee Maples, Nixa, Mo.	16,219	989		2,580 Total Solids
1958	Johnny Os Lady (Milk) John M. Diley, Canal Winchester, Ohio	15,398	798		(actual shown) ME Milk
	Victory Royal Gloria (Fat) Nim Rodney Mote, Greenwood, Texas	10,928	980		(actual shown) ME Fat
1957	O Johnny Os Toreander Design (Milk) Neal E. Diley, Canal Winchester, Ohio	14,337	673		ME Milk
	Jester Mary Bessie (Fat) Lois Ann Spahr, Findley, Ohio	12,126	675		ME Fat

Winners of the Pot O'Gold Production Contest

(continued from page xx)

Year	Name Owner	Purchase Price	Award Received	% Award of Purchase Price
1968	Favorite Whispering Willow Dawn David Murray, Healdsburg, Calif.	525	915.00	174%
1967	Sunbeam Nora Victory Donna Merrell, Alstead, N.H.	525	982.50	187%
1966	Ettas Milestone Queen Grace John Paul Estes, Clever, Mo.	800	720.00	90%
1965	Ambassador Custom Angelina Diann Spike, Owosso, Mich.	500	603.75	121%
1964	Polymeadows Liberator Millie Dwayne Disney, Portales, N.M.	600	881.25	147%
1963	Marlu Milestone Nan Merle E. Miller Jr., Carlisle, Pa.	675	1,038.75	154%
1962	Ambassador Premier Pet Tommy Spike, Owosso, Mich.	625	810.00	130%
1961	Sir Sparkling Vic Dwayne Disney, Portales, N.M.	625	1,437.50	230%

Youth Production Contests

(continued from page xx)

record of 21,340 lbs. milk, 1,039 lbs. fat and 689 lbs. protein at 1-9. She freshened with her second calf in January—a heifer by Schultz Rescue Headline, GJPI +121.

The sophomore's herd includes four cows and half a dozen heifers. He topped Division I of the youth production contest last year with Lawtons Dawson Elizabeth, a daughter of his purchase from the New York Pot of Gold Sale in 2005. He placed sixth in the Pot O'Gold Production Contest last year with the heifer he purchased with his brother, Peelers Jace Presca 312-ET, Very Good-85%.

The winner of the 2011 National Youth Achievement Contest, Cassandra L. Chittenden, Schodack Landing, N.Y., ranks fourth in the production contest with Dutch Hollow Paramount Gadget. The Very Good-83% daughter of Rock Ella Paramount-ET, GJPI +96, produced a 1-9 record with a dollar value of \$4,636.60 and an m.e. of 25,709–1,308–912. Actual production is

21,360 lbs. milk, 1,064 lbs. fat and 745 lbs. protein (3x milking).

“Gadget’s” pedigree traces five generations back to Cassie’s first Jersey calf, Huestis Brook Gail, Excellent-91%. “Gail” placed in the AJCA Leading Living Lifetime Production Contest three times and ended her career with 233,233 lbs. milk, 12,435 lbs. fat and 9,084 lbs. protein. Cassie placed in the youth production contest three times with her descendants and sent several bulls from this cow family to A.I.

A Jersey junior who has placed in six of the past seven Jersey Youth Production Contests, Emily Jane Chittenden, Schodack Landing, N.Y., rounds out the top five placings in the division for younger cows with Dutch Hollow Jevon Essence. The daughter of Forest Glen Meccas Jevon-ET, GJPI +99, produced a first lactation with a dollar value of \$4,623.56 and an m.e. of 26,466–1,301–900. Actual production for her 1-9 record is 21,920 lbs. milk, 1,052 lbs. fat and 723 lbs. protein (3x milking). She completed a second lactation over 21,900

lbs. as well.

“Essence” is a granddaughter of the cow that earned Emily three of her high rankings in the youth production contest, Dutch Hollow Paramount Emlee-ET, Excellent-90%. Descendants also rank among the breed’s best for genetic merit. Like her cousin Cassie, Emily has sent numerous bulls from this cow family to A.I.

Other juniors who will be recognized for placing in Division I of the National Jersey Youth Production Contest are: Tricia Jo Kirchdoerfer, Cape Girardeau, Mo.; Maxwell S. Chittenden, Schodack Landing, N.Y.; Amber Ettinger, Kinards, S.C.; Mandy Nicole Lutz, Lincolnton, N.C.; and Clayton Kirchdoerfer, Cape Girardeau, Mo. Other juniors who will be honored for placing in Division II are: Theresa Sweeney, Visalia, Calif.; Tyler C. Kirchdoerfer, Cape Girardeau, Mo.; Jasmine Noteboom, Warwick, N.Y.; Katherine Elizabeth Dewitt, Accord, N.Y.; and Meagan E. Chittenden, Schodack Landing, N.Y.

Pot O'Gold Production Contest

Since its inception in 1958, the Pot O'Gold Sale has offered youth between the ages of seven and 20 the opportunity to purchase genetically-superior heifers from top herds across the country. A percentage of the sale gross (varying from 7-25% over the years) is set aside in a fund and held for three years to provide cash awards for the juniors whose heifers complete the highest records for dollar value.

In 2009, the Pot O'Gold program offered 31 heifers to juniors in the Pot O'Gold Sale in Louisville, Ky. From the sale of those heifers, \$13,379 was set aside in the fund to pay out this year. It will be distributed as follows: first prize, 18%; second, 11.5%; third, 8%; fourth, 6.5%; fifth, 6%; sixth, 5.5%; seventh, 5%; eighth, 4.5%; ninth and 10th, 4%; 11th-13th, 3%; 14th-16th, 2.5% each; 17th-19th, 2.0%; and 20th-22nd, 1.5%.

To qualify for competition in the Pot O'Gold Production Contest, heifers must calve before they reach 30 months-of-age, be tested in a DHI herd owned by the purchaser or his or her parents, and have a Data Collection Rating of 90 or higher. Loss, death or transfer of ownership of any purchase before the record is complete eliminates the heifer from competition.

This year, 27 of the 31 entries met the qualifications to compete in the 2012 edition of the contest. The average m.e. production on these entries is 21,827–1,032–778 and the average dollar value is \$3,815.61.

As mentioned previously, the winner of the 2012 Pot O'Gold Production Contest is Michael Kortus. His entry, Kilgus Finalist Gem-ET, produced a first lactation with a

dollar value of \$6,847.44.

Actual 305-day production on the 1-11 record is 30,430 lbs. milk, 1,515 lbs. fat and 1,011 lbs. protein, with a cheese yield of 3,492 lbs. The record ranks fifth for milk and cheese yield among yearlings on the current National Class Leader list. "Gem's" extended 365-day record is 36,400 lbs. milk, 1,816 lbs. fat and 1,226 lbs. protein. In 2009, when Michael traveled to Louisville, Ky., for the Pot O'Gold Sale, "Gem" was on his short list of potential purchases. After all, her pedigree was backed by seven Very Good or Excellent dams and included former world fat champion, Golden MBSB of Twin Haven-ET, Excellent-94%, three generations back, and Daniel Jupiter Gunda, seven back. After he visited with fellow Jersey breeder and sire analyst, Jeff Ziegler, the daughter of BW Finalist, GJPI -17, shot to the top of his list.

"Jeff was familiar with the herd at Kilgus Dairy and thought 'Gem' would fit the management at our herd perfectly," said Michael. "As well, he had seen her dam and really liked her."

Michael placed the high bid of \$2,600 on the consignment from Paul Kilgus, Fairbury, Ill., and brought her home to the family farm, Mainstream Jerseys, which has led the nation for milk, fat and protein production the past six years.

"Gem" freshened the following September with her first calf—a heifer—and had five tests over 100 lbs. milk. She peaked in April with 122 lbs. milk and was still giving 72 lbs. milk before she was dried off in September 2011. Michael consigned her daughter, Mainstream TBone Bolden, to The All American Jersey Sale in 2011.

Though "Gem" is no longer in the herd because of complications related to her second calving, Michael has a strong foundation of other animals from which to work, including a pair that earned high laurels in previous youth production contests.

About 75% of his current herd of 18 cows and 17 heifers traces to Lagerways Hallmark Redrose, Excellent-91%, winner of the National Jersey Youth Production Contest in 2003. "Redrose" has seven records—all over 30,000 lbs. milk—and placed in each category of the 2011 Leading Living Lifetime Production Contest.

The other foundation animal that has proved a worthy investment was his purchase from the Pot O'Gold Sale in 2007, Havs Iatola Topaz, Excellent-91%. She won the ensuing production contest and is the current National Class Leader for yearling cheese yield and fat production and junior three-year-old milk production. "Topaz" freshened with a heifer calf by Sunset Canyon Dignitary-ET, GJPI +258, in late August.

Michael will nearly recoup his investment in "Gem" as he will receive a check in the amount of \$2,408.22.

He attends Whatcom Community College and plans to enroll at Western Washington University this winter and major in accounting. He is in his last year of Jersey youth projects but plans to remain involved with the Registered Jersey herd at Mainstream Jerseys.

The second-ranking junior in the Pot O'Gold Production Contest is Nathan Lawton, previously mentioned. Nathan will receive a check for \$1,538.59.

Placing third in the contest is Jacob Phillips, Golden, Ill., with Woodstock Jevon Rudi. The "Jevon" daughter produced a first lactation with a dollar value of \$4,332.63. Actual production on the 2-5 record is 20,990 lbs. milk, 1,024 lbs. fat and 697 lbs. protein.

Jacob is a senior at Illinois College majoring in computer science. His herd includes a dozen cows and an equal number of heifers. Cows are managed with the herd at D & D Jerseys, owned by his aunt, Donna Phillips, and her husband, Dan Stock, in Newton, Wis. Heifers are raised at Jacob's farm in Illinois.

Jacob purchased "Rudi" from Woodstock Dairy at the sale in 2009 for \$2,000. He will receive a check in the amount of \$1,070.32.

Juniors ranked fourth, fifth and seventh in the 2012 Pot O'Gold Production Contest are Kirchdoerfer siblings from Kirchdoerfer Dairy Farm in Cape Girardeau, Mo. Tricia placed fourth with D&E Abe Wyonna 21390; Tyler was fifth with Jevon J May and Clayton placed seventh with Nymans Achilles 10646.

The siblings are the third generation to breed Registered Jerseys on a farm that has been in the family since 1896. The Kirchdoerfers make a family vacation of their annual trek to Louisville to participate in All American festivities the first weekend in November. They have been routine buyers at the Pot O'Gold Sale, purchasing 18 head amongst the three of them, and are regular award recipients at the Junior Banquet.

When it comes to purchasing heifers as foundation animals for their herds, production potential is paramount. "The rule of thumb here is that if you don't work, you don't come here," said the siblings' grandmother, Mildred. "We want our cattle to look nice, but production pays the bills."

Tricia will receive a check for \$869.64 for her entry, "Wyonna 21390." The "Abe" daughter produced a first lactation with a dollar value of \$4,324.66. Actual production for her 1-10 record is 19,680 lbs. milk, 821 lbs. fat and 698 lbs. protein. Tricia purchased "Wyonna 21390" from D & E Jerseys, Hilmar, Calif., for 2,200.

The 19-year-old is a sophomore at Southeast Missouri State University majoring in agriculture business. Her herd of 20 cows and heifers has a 2011 herd average of 18,738 lbs. milk, 833 lbs. fat and 652 lbs. protein and includes three Excellent cows. She has placed in the Pot O'Gold Production Contest six of the past seven years.

Tyler will receive a check for \$802.74 for "May." She produced a first lactation with a dollar value of \$4,297.64. Actual production on her 1-10 record is 18,480 lbs. milk, 794 lbs. fat and 686 lbs. protein. The Very Good-84% "Jevon" daughter has produced a subsequent record of 2-11 305 21,240 4.0% 847 3.6% 763 98DCR. She was purchased from Rowzee Jersey Farm, Newton, Miss., for \$3,400.

Tyler is a senior at Notre Dame High School. He and Tricia attended the second Jersey Youth Academy. His herd of 40 cows and heifers has a 2011 herd average of 20,048 lbs. milk, 822 lbs. fat and 686 lbs. protein and includes six Excellent cows. Tyler is interested in pedigrees, records and identification and takes a special interest in the mating program. He has placed in the Youth Production Contest twice and the Pot O'Gold Production Contest four times.

Eleven-year-old Clayton is making his debut in the production contests with his first purchase from the Pot O'Gold Sale and will earn a check for \$735.85. He is in charge of identifying cows on test day and enjoys feeding calves. His herd of six cows and heifers has a 2011 herd average of 19,928 lbs. milk, 883 lbs. fat and 701 lbs. protein and includes two Excellent cows.

Other juniors who will be recognized for placing in the 2012 Pot O'Gold Production Contest are: Kara Maxwell and Ryan Lawton, mentioned previously; Abby Tauchen, Bonduel, Wis.; Benjamin P. Colopy, Castile, N.Y.; Matt Linehan, River Falls, Wis.; Dorothea Riley Baker, Wyoming, N.Y.; Hannah Sorenson, Pine River, Wis.; Tommy Allen; Benjamin P. Grammer, Sebring, Ohio; Wyatt Taylor, Hilmar, Calif.; Caitlin Avila, Dalhart, Texas; Carley Orman, Dalhart, Texas; Brock Tate, Hilmar, Calif.; William D. Grammer, Sebring, Ohio; India Tauchen, Bonduel, Wis.; and Korri Ann Briggs, Cambellsville, Ky.

The 55th Pot O'Gold Sale is scheduled for November 3, 2012, in Louisville. The animals purchased from this sale will compete in the 2015 Pot O'Gold Production Contest.