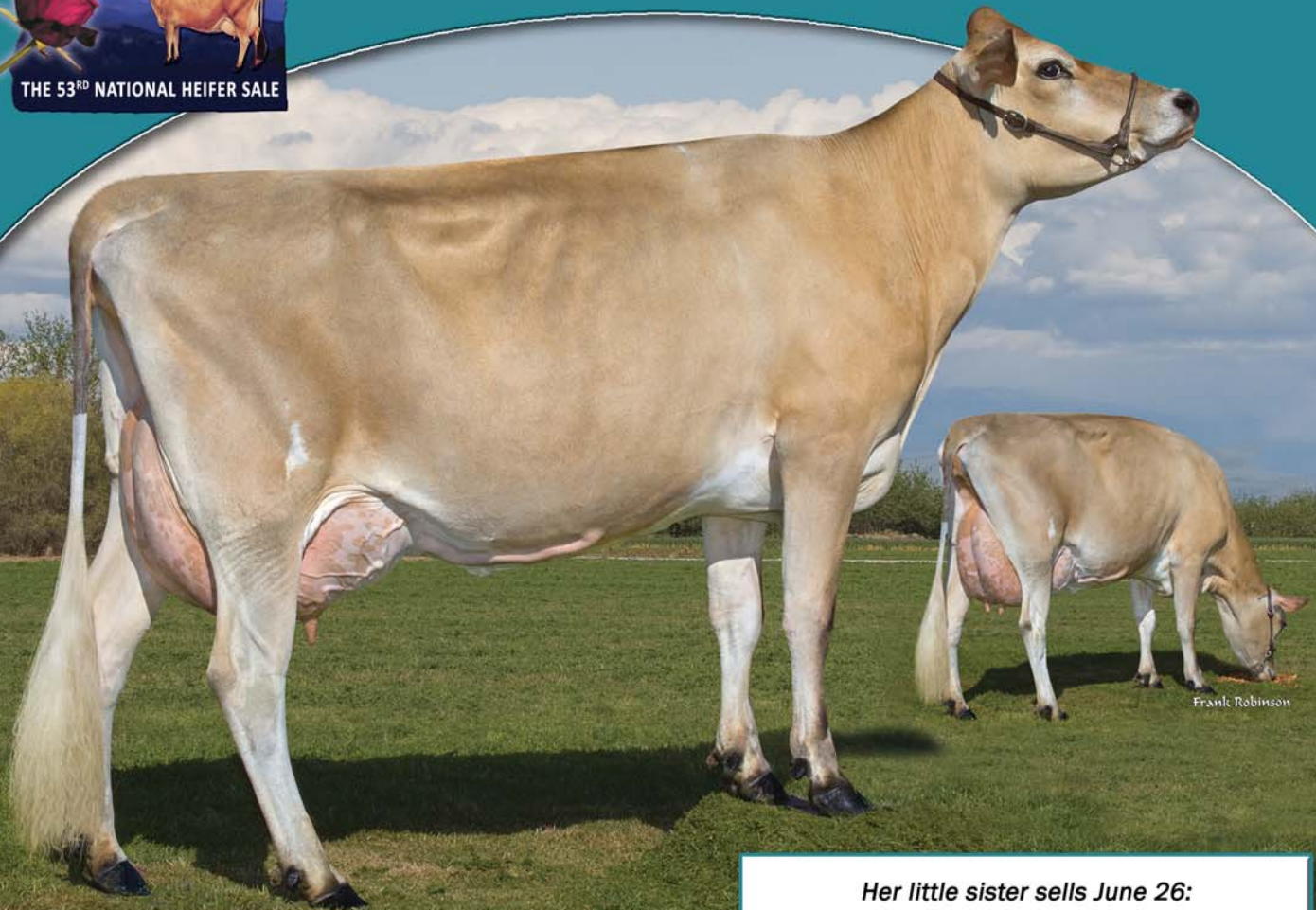


# Persistent PRODUCTION with Elite Genetics



THE 53<sup>RD</sup> NATIONAL HEIFER SALE



Frank Robinson

Her little sister sells June 26:

## D&E Carrier Blitzen 21580, P9

Born: June 16, 2009 • PA +799M, +15F, +23P  
+\$195CM, +\$201NM, +\$212FM JPI +94  
Sire: BW Carrier-ET  
To be served to "Merchant" by sale time.

## D&E Merchant Blitzen 21001, 90%

Projected to 19,870—953—479 ME at 2-8 118%RV  
14 days in milk she had 78 lbs. milk with a  
5.4% fat and 3.7% protein test.

USDA GPTA (4/10) +247M, +28F, +17P  
\$437CM, +\$386NM, +\$336FM GJPI +128

- Ranks 44<sup>th</sup> for GJPI among genomically tested cows
- She has a "Carrier" son going to Alta/Jerseyland Sires

Their dam: **D&E Duke Blitzen 10777, 83%**  
3-7 282 17,980 4.3% 780 3.8% 683 101DCR  
*The model of Jersey efficiency: calving every 11 months for three consecutive lactations, 1-9, 2-8, 3-7 and due with next calf at 4-6.*

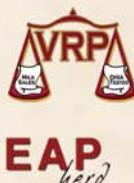
Their grandam: **D&E Paramount Blitzen, 84%**  
5-0 302 22,610 3.8% 865 3.5% 784 101DCR

Also look for Avi-Lanche's contribution to the National Heifer Sale, **Avi-Lanche Abe Season 21567, P9**. She is sired by "Abe" and out of an E-91% "Avery" with 21,460M. The next dam is Excellent with 19,640M.

Visit us on the web at <http://dejerseys.usjersey.com>

## D & E JERSEYS

Donnie and Elsa Sherman, Wyatt Taylor  
9375 Washington Road, Hilmar, California 95324  
Email: [dejersey@cwnet.com](mailto:dejersey@cwnet.com) • 209/667-0582  
Benny Rector, Dairy Herd Manager • 209/495-8312



## AVI-LANCHE JERSEYS

Richard, Jennifer, Sidney and Caitlin Avila  
18 Canyon View, Dalhart, Texas 79022  
Phone: 806/244-3164 • Email: [rjavila@xit.net](mailto:rjavila@xit.net)  
John Kisst Jr., Dairy Herd Manager • 806/884-9072