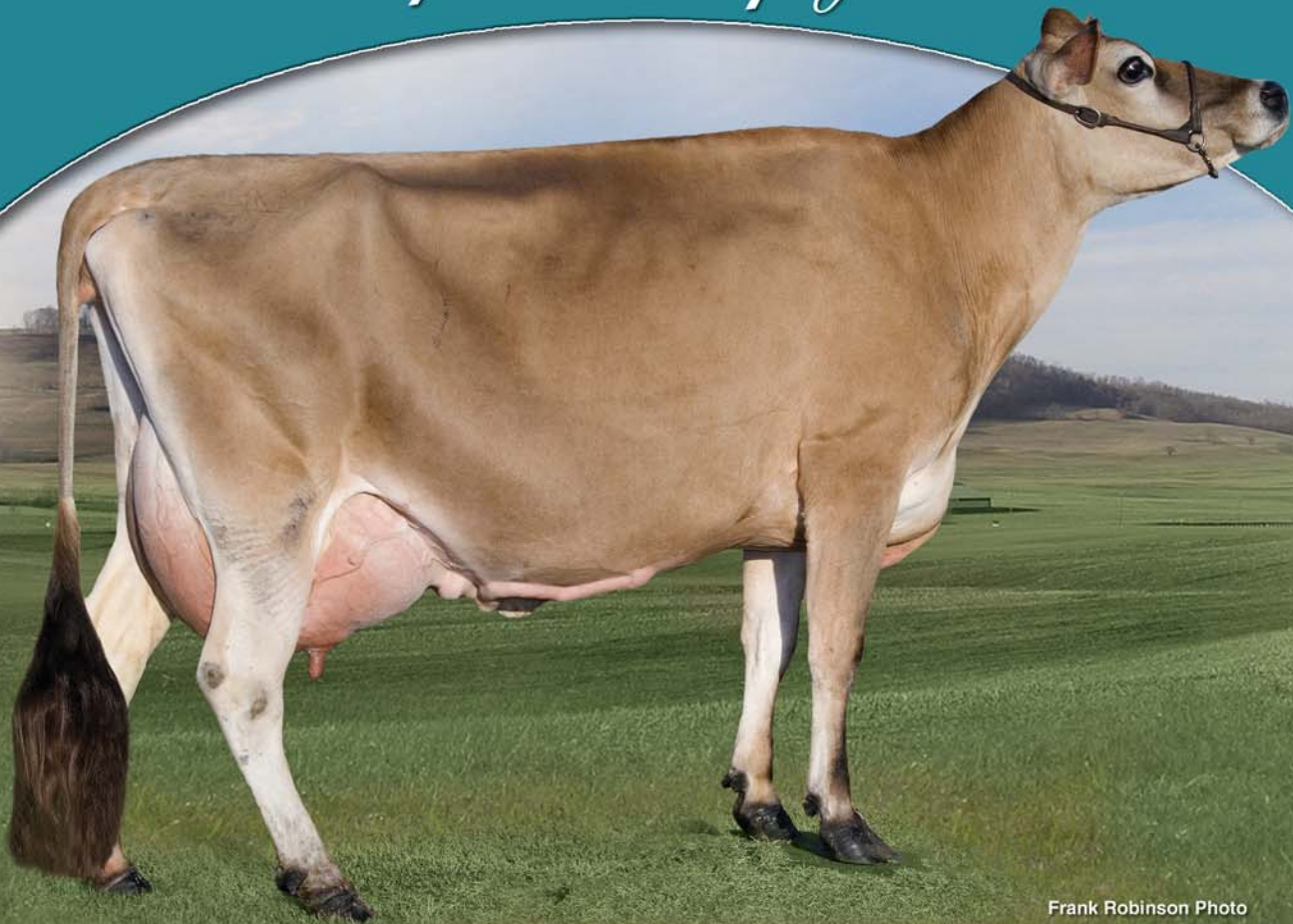


Persistent PRODUCTION with the power of genomics



Frank Robinson Photo

Recent results from "Violet" and "Virtue's" genomic tests:

D&E Abe Violet, 90%

	Genomic	Traditional
JPI	+302	+240
Milk	+1,790	+1,376
Fat	+70	+65
Protein	+59	+47
CM\$	+573	+482
NM\$	+577	+471
FM\$	+575	+450

3-3	305	20,980	4.8%	1,003	3.7%	768	97DCR
4-7	283	19,800	4.9%	965	3.7%	730	98DCR
5-6	292	20,170	4.8%	959	3.7%	737	101DCR
6-6	305	22,060	4.2%	928	3.6%	791	99DCR

Her granddaughter: **All Lynns Impuls Virtue-ET**

	Genomic	Traditional
JPI	+305	+272
Milk	+1,488	+1,231
Fat	+67	+73
Protein	+62	+54

Six grandsons (out of "Paramount Violet") rank in the top 10 of genomically tested young bulls.

Her dam, D&E Paramount Violet, just went Excellent-90% for her owner David Allen, Wisconsin.

Visit us on the web at <http://dejerseys.usjersey.com>

D & E JERSEYS

Donnie and Elsa Sherman, Wyatt Taylor
9375 Washington Road, Hilmar, California 95324
Email: dejersey@cwnet.com • 209/667-0582
Benny Rector, Dairy Herd Manager • 209/495-8312



AVI-LANCHE JERSEYS

Richard, Jennifer, Sidney and Caitlin Avila
18 Canyon View, Dalhart, Texas 79022
Phone: 806/244-3164 • Email: rjavila@xit.net
John Kisst Jr., Herdsman • 806/884-9072