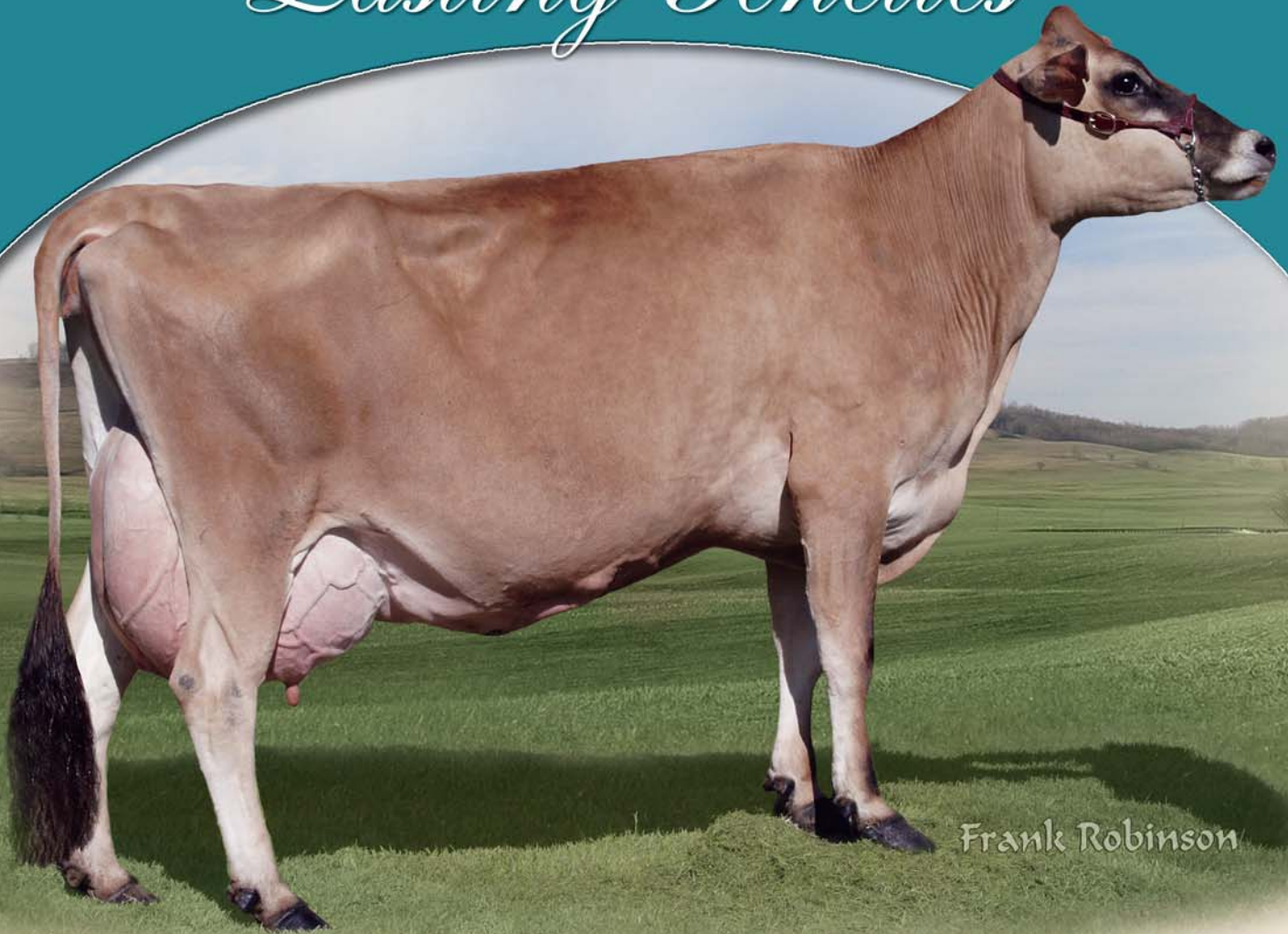


# Persistent PRODUCTION

with ... *Lasting Genetics*



Frank Robinson

## Woodstock Super Lucent-ET, 90%

1-11 305 13,670 5.3% 731 3.9% 534 101DCR  
 2-11 300 18,170 4.8% 879 3.8% 686 99DCR  
 3-11 294 19,330 5.0% 969 3.8% 738 97DCR  
 4-11 290 19,360 5.5% 1,058 3.7% 715 96DCR  
 5-10 291 20,850 4.8% 991 3.7% 779 99DCR  
 6-10 304 19,360 4.7% 910 3.8% 737 101DCR  
 Fresh at 7-9 and milking 79 lbs. daily.

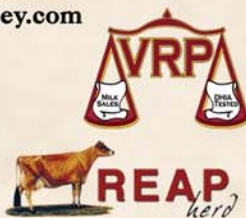
She has daughters in the herd by "Abe" and "Carrier."  
 "Lucent" will soon be flushed to the #1 bull, "Nitis."

We purchased "Lucent" at the 2002 National Heifer  
 Sale from Woodstock Dairy, OR.

Visit us on the web at <http://dejerseys.usjersey.com>

## D & E JERSEYS

Donnie and Elsa Sherman, Wyatt Taylor  
 9375 Washington Road, Hilmar, California 95324  
 Email: [dejersey@cwnet.com](mailto:dejersey@cwnet.com) • 209/667-0582  
 Benny Rector, Dairy Herd Manager • 209/495-8312



Dam: **Woodstock Alf Merri Lou, 88%**

1-11 305 17,110 4.2% 726 3.7% 636 DHIR  
 3-2 305 21,740 4.1% 892 3.6% 791 DHIR  
 4-3 305 25,070 4.3% 1,069 3.6% 891 100DCR

Grandam: **Woodstock Sooner Merri Lou-ET, 88%**

3-0 300 18,430 4.4% 813 3.6% 664 DHIR  
 3-11 305 18,720 4.3% 811 3.7% 689 DHIR  
 6-0 305 19,290 4.6% 886 3.6% 704 100DCR

Third Dam: **Gaypegs Duncan Meringue, 91%**

3-0 305 20,600 4.6% 957 3.4% 709 DHIR  
 4-1 305 22,060 4.5% 996 3.4% 752 DHIR  
 6-4 303 20,930 4.2% 869 3.4% 718 DHIR

From the same maternal line as  
 "Lexington," "Lieutenant" and "Leland."

## AVI-LANCHE JERSEYS

Richard, Jennifer, Sidney and Caitlin Avila  
 1913 Cheyenne Trail, Dalhart, Texas 79022  
 Phone: 806/244-3164 Email: [rjavila@xit.net](mailto:rjavila@xit.net)