

# Bush River Jerseys

## *Building a Strong Foundation*

Over the past decade we have doubled our herd size to over 400 cows. In doing this we took advantage of the Jersey's amazing reproductive efficiency and other highly profitable traits. However, we also took the opportunity to expand our herd's genetic base with adding some of the breed's most decorated and well-known cow families. This has been a very beneficial investment as we have marketed numerous females through our sales and placed several sons in A.I. from these families. Below are some of the impact sons of these purchases.

*From the Duncan Belle Family — sons of Shane Bella-ET*

- |   |  |
|---|--|
| 7JE797 Bush River Belles <b>BOWTIE-ET</b> | 11JE812 Bush River Hallmark <b>BARUBA-ET</b> |
| • High in type and udder traits           | • Plus for milk, fat and protein             |
| • Semen available from Select Sires       | • Semen available from Alta/Jerseyland Sires |

*Sons of Williams Impressive Idea-ET — bred by the Gold Dust Syndicate*

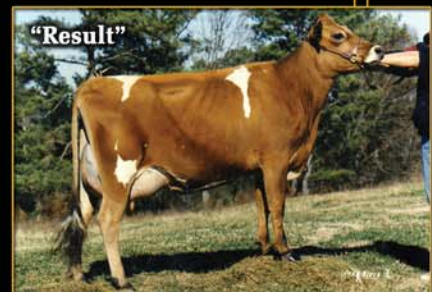
- |  |  |
|--|--|
| 29JE3301 SC Gold Dust Paramount<br><b>IATOLA-ET</b>                              | 200JE317 SC Gold Dust Paramount<br><b>IACocca-ET</b> |
| • Premier Performance Sire of the 2010 All American Jersey Show                  | • "Iatola's" full brother with high DPR              |
| • Top 10 ranks for Type, JUI, Foot Angle and Udder Depth among Active A.I. bulls | • Semen available from Semex                         |
| • Semen available from ABS Global  | 7JE684 SC Golddust Connection <b>INSTANT</b>         |
|  | • High type with components                          |
|  | • Semen available from Select Sires                  |

*"Barber" son of Sweet Grass 254 Greeta*

- 76JE121 Bush River Barber  
**MBSB GUIDO-ET**
- From a deep production family
  - Semen available from Taurus Service

*"Avery" son of Poplar Top Brook Result*

- 1JE370 Bush River  
**Avery ROULETTE-ET**
- High DPR with plus milk, fat and protein
  - Semen available from Genex



Visitors welcome anytime to the farm. Come and see our favorites and sample some top-notch Jersey milk products straight from our bottling plant!

*"Breeding for cheese yield dollars, teat placement and udder depth"*

**Richard Doran, Jr. and J. J. Malnati**  
 3342 Bush River Road, Newberry, SC 29108-9456  
 E-mail: bushriver@aol.com http://bushriver.usjersey.com  
 803/924-1466 (Rick) - 803/276-7366 (Dairy, Fax)



# Skip-A-Rilla

## JERSEYS

**The Clifford Stiles Family**  
 Clifford Stiles and Tammie Stiles Doran  
 212 Airport Rd., Newberry, SC 29108  
 803/924-1417 phone · skiparilla@aol.com