

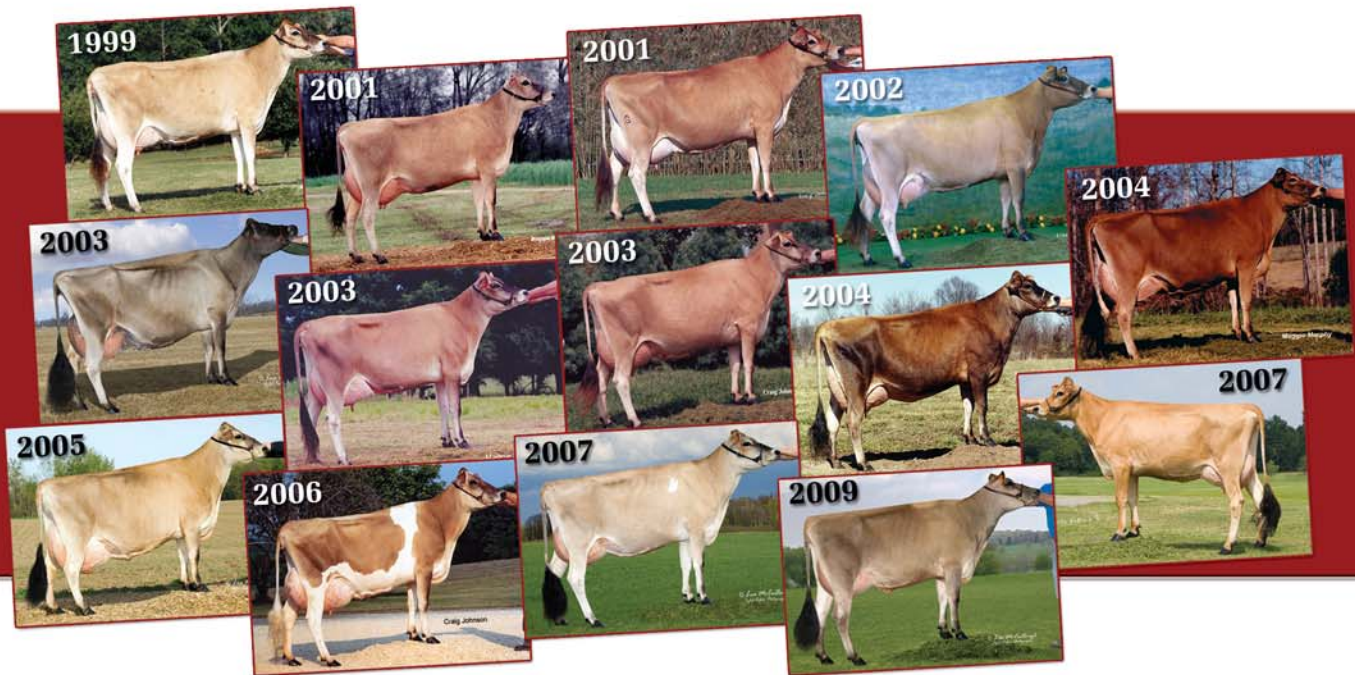


Through the Years



Bush River & Treasure Chest Combination XI Sale
September 6, 2010 — 3:30 PM — Newberry, S.C.

With the 10th anniversary in the books we are now preparing for the next decade. Here's a look back at some of the quality consignments that have sold in the sale.



Left to right: TC DC Lester Bessie, E-93%, 4-8 305 19,310 4.2% 803 3.2% 609 100DCR ♦ Hallmark Fantasia of WF/L&M, VG-87%, 2-9 305 15,200 5.5% 838 3.7% 564 95DCR ♦ Croyal Topkick Barber Shot-ET, E-90%, 4-6 230 20,350 4.0% 807 3.5% 712 88DCR ♦ SC Golddust Tkick Idea Z25-ET, E-91%, 1st Junior 2-year-old, 2004 Illinois State Fair ♦ Piedmont Jude Hope, E-93%, 3-5 305 18,790 5.0% 942 3.6% 670 93DCR ♦ SAR Bomber Tulip, VG-85%, 1-11 305 15,590 5.4% 839 3.5% 545 96DCR ♦ KCBC Freedom Dixie Belle, E-92%, 5-8 305 14,200 4.5% 642 3.5% 500 94DCR ♦ Berrys Declo Dewey-ET, E-90%, 4-7 305 20,360 3.8% 782 3.4% 690 72DCR ♦ Springdale Connection Jules, E-90%, class winner, 2004 & 2005 North Carolina State Fair Junior Show ♦ WF Jace Julia-ET, E-91%, 4-0 305 23,080 4.7% 1,087 3.7% 865 102DCR ♦ Gabys Showtime Rickie, E-90%, 2 lactations average 20,575—910—645 ME ♦ SAR Signature Fern, VG-88% ♦ Trinitys Logan Jane, VG-85%, 2-0 305 16,010 4.7% 757 3.5% 556 89DCR ♦ BRJ Centurion B John Bobbie E-12, 16,389—784—600 ME at 1-11



With the 11th sale of the series in the works we at Bush River and Treasure Chest Jerseys are building a strong tradition. We will continue to 'Let the good ones go,' a philosophy we both believe in!

"Breeding for cheese yield dollars, teat placement and udder depth"



J. J. Malnati and Richard Doran, Jr.

3342 Bush River Road, Newberry, S.C. 29108-9456
 E-mail: BUSHRIVER@aol.com http://bushriver.usjersey.com
 803/924-1466 (Rick) - 803/276-7366 (Dairy, Fax) - 803/276-6122 (J. J. "Doc")



The Clifford Stiles Family

Clifford Stiles and Tammie Stiles French
 212 Airport Rd., Newberry, S.C. 29108
 803/924-1417 phone · SKIPARILLA@aol.com